

Adult Critical Care Specialty Examination

Presented by

Robert L. Joyner, Jr., PhD, RRT, RRT-ACCS, FAARC

President - NBRC

Professor of Health Sciences

Associate Dean – Henson School of Science & Technology

Director – Respiratory Therapy Program

Salisbury University

Salisbury, MD

Outline

- Personal Background
- NBRC Exam Development
- ACCS Exam
 - Stats
 - Content
 - Example questions
- AARC Human Resource Study
- Comments from Exam Candidates

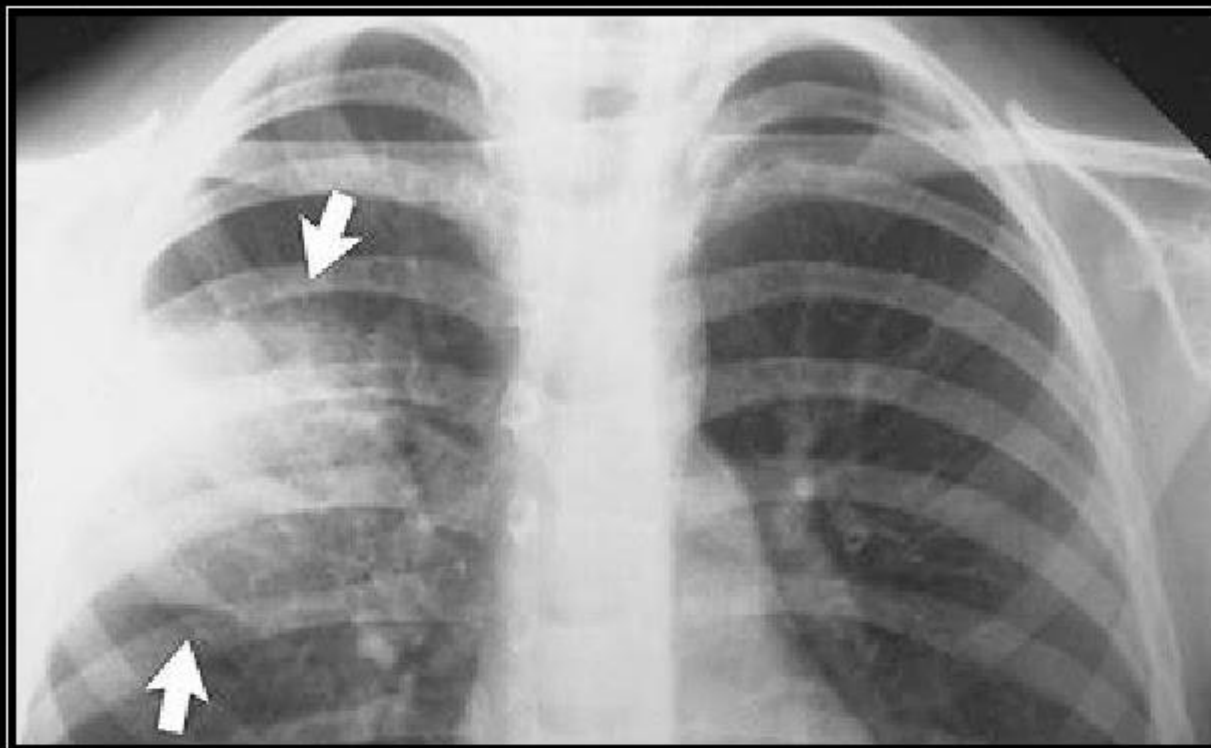


1 Ocean City, Maryland
2 Chesapeake Bay
3 The Outer Banks
4 Shenandoah National Park
5 Williamsburg, Virginia

Driving Times from SU
 Ocean City, MD 30 minutes







RT CARE

ALWAYS THERE WHERE WE'RE NEEDED
WHEN WE'RE NEEDED



www.nbrc.org

EXAM DEVELOPMENT

Exam Development

- Request to develop new examination
 - Must come from outside the NBRC
 - American Association for Respiratory Care (AARC)
 - CHEST (ACCP)
 - The American Society of Anesthesiologists (ASA)
 - The American Thoracic Society (ATS)
- The request to develop the ACCS came from the AARC. (mid-2005)

Five Step Process

- Financially sustainable
 - Practitioners pay fees that are the sole support of the NBRC
- Personnel study (2007)
 - Sufficient ongoing number of potential candidates
- Job analysis (2008 – 2009)
 - Uniform national practice
- Test specifications (2010 - 2011)
 - Item bank developed
 - Four hour exam
- Criterion Validation Study (future potential)

Examination Development Committee Composition

- 11 Examination Committee Members
 - Five respiratory therapists
 - Six critical care physicians
- Representatives from the AARC, CHEST (ACCP), and the ASA

Credentialing Exam Availability

- First offering July 17, 2012

Our colleagues in the ICU have specialty credentials demonstrating their expertise in adult critical care. Now we do, too.

Keith Lamb, RRT
Chair – AARC Adult Acute Care Section
NBRC Horizons (2013)

Adult Critical Care Specialty Examination

- Established July 2012
- Designed specifically for a respiratory therapist with the RRT credential and experience in the field of adult critical care
- Focused on competencies unique to therapists practicing in an adult critical care setting and not basic competencies of general respiratory care.
- 1,714 credentials awarded since inception

Adult Critical Care Specialty Examination

- Admission Requirement:
 - Applicant shall be a Registered Respiratory Therapist (RRT) for at least one year prior to applying for the Adult Critical Care Specialty Examination.

Adult Critical Care Specialty Examination

- Examination Fee:
 - New Applicant - \$300
 - Repeat Applicant - \$250

Adult Critical Care Specialty Examination

- Examination Length:
 - 170 items (150 scored; 20 pretest)
 - 4 hours

Test Specifications

- I. Respiratory Critical Care
 - a. Manage Airways
 - b. Administer Specialty Gases
 - c. Manage Ventilation
 - d. Deliver Pharmacologic Agents
- II. General Critical Care
 - a. Assess Patient Status and Changes in Status
 - b. Anticipate Care Based on Laboratory Results
 - c. Anticipate Care Based on Imaging and Reports of Imaging

Test Specifications

- d. Anticipate Effects of Pharmacologic Agents
- e. Anticipate Care Based on Nutritional Status
- f. Prevent Ventilator Associated Pneumonia
- g. Recognize and Manage Patients with Infections and Sepsis
- h. Manage End-of-Life Care
- i. Prepare for Disasters
- j. Interact with Members of an Interdisciplinary Team
- k. Perform Procedures
- l. Troubleshoot Systems

Example Questions

An intubated patient is experiencing episodes of violent coughing. The endotracheal tube is verified in proper position by chest radiograph, and breath sounds are clear bilaterally. The patient is receiving maximum sedation and pain control. An adult critical care specialist obtains a physician's order to administer benzocaine spray to relieve coughing. The next day, the patient appears cyanotic, SpO₂ is 87%, and the following laboratory values are available:

pH	7.33
PaCO ₂	37 torr
PaO ₂	99 torr
HCO ₃ ⁻	20 mEq/L
BE	-5 mEq/L
SaO ₂ (hemoximetry)	87%
Hb	9 g/dL

Which of the following is the MOST appropriate treatment?

- A. methylene blue
- B. acetylcysteine
- C. blood transfusion
- D. hyperbaric oxygen

Example Questions

Which of the following is a side effect of succinylcholine chloride (Anectine)?

- A. oliguria**
- B. tachycardia**
- C. hyponatremia**
- D. hyperkalemia**

Examination Items

- Culmination of
 - 70 specialists submitting items for the examination

Pass Rates

January 1 – December 31, 2015

860 examinations administered

First-time Candidates	79.0%
-----------------------	-------

Repeat Candidates	44.8%
-------------------	-------

AARC Human Resource Survey

Total Compensation

- The RRT-ACCS credential was associated with an additional \$4079

Adult Acute Care Specialty Section

Adult Acute Care Section

[Post New Message](#)
[Visit our main site](#)

Feb 20, 2016

started 2 days ago, [Mr. Christopher Price](#) (5 replies)

Critical Care Test

1. [I agree that having your employees take the ACCS...](#) Crystal Hodge, AE-C,RRT-ACCS,NPS

1. [Re: Critical Care Test](#)

[Reply to
Group](#)

[Reply to
Sender](#)



Feb 20, 2016 7:01 PM

[Crystal Hodge, AE-C,RRT-ACCS,NPS](#)

I agree that having your employees take the ACCS would be a great way to help them review and learn important information. I think studying and taking the ACCS helped me become a better therapist.

Crystal Hodge
Charleston Area Medical Center
Belle WV



Our progress as a nation can be no swifter than our progress in education. The human mind is our fundamental resource.

John F. Kennedy

How to Contact the NBRC...

**NBRC Executive Office
18000 W. 105th Street
Olathe, KS, USA 66061
Toll Free - 888-341-4811
913-895-4900
Fax 913-895-4650**

www.nbrc.org

nbrc-info@nbrc.org

Thank You!